

senses

THE INTERNATIONAL WELLNESS GUIDE

SENSES AWARDS
2013 DUBAI

THE SENSES AWARD 2013 GOES TO...

Dr. Armin Nedjat, CEO

„Champions Implants GmbH, Germany“

„SENSES *Innovations Award* 2013“

Dental implants are artificial roots, usually in the shape of screws, which are inserted into the jaw bone (lat. "implantare") to replace missing teeth. The implants provide support for fixed prosthodontic restorations such as single crowns or bridges, or they can allow removable prostheses to be securely anchored. Dental implants have been used successfully for approximately 40 years and are routinely used in the day-to-day work of most dental offices. In 2010, more than 1 000 000 implants were inserted in Germany alone, and their use continues to grow worldwide.

by Sophie von Szereclay



Dr. Armin Nedjat, CEO Champions Implants GmbH

Minimally Invasive Implantation Method () ...

MIMI® differs considerably from the CIM (Classical Implantation Method) both its organizational and prosthodontic concepts. MIMI® is based on current findings on bone physiology, that show bone needs "progressive training" to ensure the natural bone remodeling process.

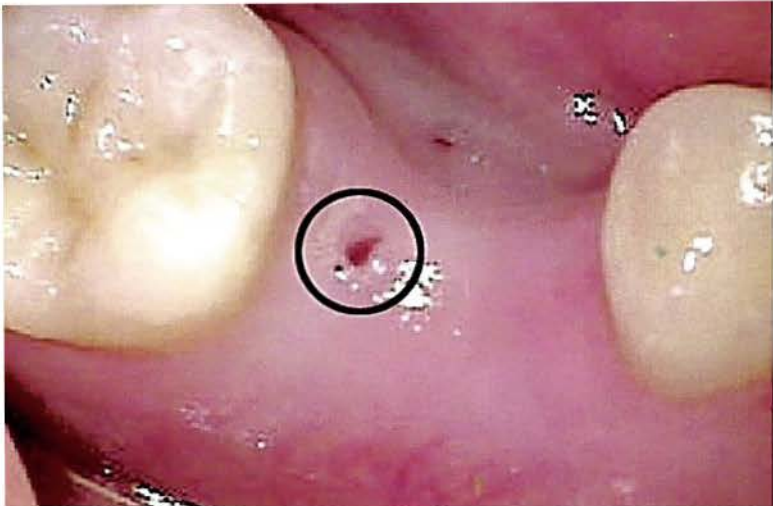
Immediate loading has long been standard practice in other orthopedic and surgical fields. You may be familiar with knee and hip surgery where implants are generally loaded early, sometimes as soon as a few days after the implantation of a knee or hip joint.

Certainly you have also heard of the endoscopic (minimally invasive, no incisions) or "keyhole" surgery. MIMI® makes full use of this method. MIMI® implantation can be performed with as little as 3 mm of horizontal bone availability (width) and 6 mm of vertical bone availability (height). In the first

session, the bone is drilled transgingivally (through the gingiva). The drilled bone cavity will have a diameter no more than 70 % of the implant thread diameter.

Then, in the same session, the one-piece or two-piece Champions® implant is inserted almost bloodlessly into the bone, condensing the bone (compressive-condensing). An incision of the mucosa (gingiva) is usually not necessary.

A MIMI® implantation is finished in a few minutes in only one session. The impressions for the prosthodontic restoration can be taken within two to twelve days following the implantation (when, for example, the prosthodontic restoration is fitted on three or four Champions® implants that can be splinted together).



Almost invisible: the MIMI® cavity



A 100 year-old patient covered in articles in the press about the oldest patient in Germany treated with the MIMI® method.



MIMI® differs from the classical implantation procedure in the following aspects:

- In 80 % of cases, just one surgery session is necessary- no incising, no flapping open or suturing of wounds
- The final prosthodontic restoration can be placed in less than two weeks, and often within a few days (exception: implants for small dental gaps with less than four teeth/implants)
- Cost reductions of up to 50 %

Long-Term Solution - Implantations done with MIMI® have a success rate equal to or better than those done using the conventional method. Additionally, in contrast to many multi-piece implant systems, one-piece or two-piece Champions®

implants do not to break, and their internal screws remain tight, even after many years.

Gentle Implantation - Due to the small bone cavity, inflammation, swelling, and wound pain are rarely observed after the MIMI® implantation.

Nearly Painless - Patients reported that they felt only a slight pressure in the surgical area on the day of the surgery. This area can be treated with an ice pack and gentle pain killers.

High Quality and Efficient Treatment Method - Thanks to MIMI® and the Champions® implants, there is very little risk of bacterial infection or bone loss. While other multi-piece systems can introduce bacteria into the wound through the micro-gap, Champions® implants have eliminated this problem.

In 2010, more than 50 000 Champions® implants were successfully placed and restored in Germany. Market analysts have predicted that even more Champions® implants will be placed worldwide (using the MIMI® method) in the coming years. In fact, Champions-Implants GmbH is one of the few German dental implant companies to have received the FDA 510(k) approval for their dental implant system.

Champions® implants are made in Germany to exacting specifications, and they are made of titanium-grade 4 (99 % pure titanium). They are biocompatible and usually do not elicit an immunological rejection (implant allergy). These implant types ensure excellent osseointegration (the functional and structural connection between bone tissue and the implant surface). It has been shown that there have been more problems with intolerance of titanium-grade 5 implants (alloy with aluminum and vanadium elements) than with titanium grade 4 implants.

Compared to other dental implant surfaces, the Champions® implant surface has been rated one of the best by a study from the University Clinic in Cologne, Germany.

www.mimi-info.com
www.champions-implants.com